





32. Mention two methods of weeding in flower garden.
- Banking and light hoeing
  - Pruning and slashing
  - Hand weeding and slashing
  - Chemical and banking
33. Explain why sub soil has light colour than top soil.
- It has less organic matter
  - It has more organic matter
  - It contains a lot of micro organisms
  - It has a lot of water
34. Why should a cage for a buck be slightly larger than for a doe?
- To have enough ventilation
  - To control parasites
  - To keep more rabbits
  - To ease mating
35. Which of the following is not safety measure when using farm cart?
- Avoid over loading
  - Properly inflated tyres
  - Keep battery acid away from the skin and eyes
  - Bolts and nuts should be tightened
36. The best time for a farmer to sell their produce is when the ...
- Demand is low
  - Demand is high
  - Supply is high
  - Both demand and supply are equal

**Figure 3** is a diagram of indigenous farm machinery and technology



37. Name the farm machinery.
- |           |                   |
|-----------|-------------------|
| a. Querns | c. planting frame |
| b. Ground | d. leaf bag       |
38. The farm machinery above is used for
- Storing seeds and dried vegetables
  - Storing fresh fish

- Storing fresh vegetables
- Legumes

39. What term is given to removal of excess plants in planting stations?
- |             |             |
|-------------|-------------|
| a. Mulching | c. pruning  |
| b. Tending  | d. thinning |

*A woman keeps layers in deep litter house. After sometime, she observed that the flow has dropping with blood.*

40. What disease do layers have?
- |                |                 |
|----------------|-----------------|
| a. Coccidiosis | c. fowl pox     |
| b. New castle  | d. fowl cholera |

### SECTION B (60 MARKS)

Answer all questions in spaces provided

#### SCIENCE AND TECHNOLOGY

41. (a) Define the term machine.

---



---

(2 marks)

- (b) Mention two types of machine.

---



---

(2 marks)

- (c) Give two types of pulleys.

---



---

(2 marks)

- (d) What name is given to the point where level turns?

---



---

(1 mark)

42. (a) List two guidelines for planning meals for sedentary workers.

---



---

(2 marks)

(b) Give two signs of scurvy.

---

---

(2 marks)

(c) Define the term gravity.

---

---

(2 marks)

43. (a) Mention three uses of a leaf to plant.

---

---

---

(3 marks)

(b) Give two parts of a leaf.

---

---

(2 marks)

(c) Explain what happens when water is heated?

---

---

(2 marks)

(a) Solution is \_\_\_\_\_ in mixture. (1 mark)

(b) List two properties of solids?

---

---

(2 marks)

(c) What is matter?

---

---

(2 marks)

Figure 2 below shows one type of kitchen.

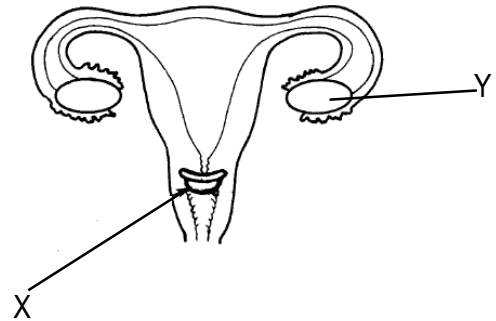


44. (a) Name the type of kitchen.

---

(1 mark)

Figure below is a diagram of family planning.



(b) Identify the method of family planning above?

---

(1 mark)

(c) What is the function of method above?

---

(1 mark)

45. (a) Name two effects of food taboos and beliefs.

---

---

(2 marks)

(b) Why eating varieties of food is necessary.

---

---

(1 mark)

(c) Explain the difference of decoding and walkie talkle.

---

---

(2 marks)

## AGRICULTURE

46. (a) What are poultry

---

---

(1 mark)

(b) List down two examples of poultry.

---

---

(2 marks)

(c) Name two methods of fertilizer application in vegetables.

---

---

(2 marks)

47. (a) The three safe ways of using farm tools are:

---

---

---

(3 marks)

(b) Define commercial farming.

---

---

(2 marks)

(c) State one use of the following farm machinery.

(i). Ridger

---

(1 mark)

(ii) Plough

---

(1 mark)

48. (a) What do you understand by the term stocking fish pond?

---

---

(2 marks)

(b) Give the difference between fingerings and fries.

---

---

(2 marks)

49. (a) Give three characteristics of cattle suitable for breeding.

---

---

(3 marks)

(b) Mention two end products of hoofs and horns in cattle farming.

---

---

(2 marks)

(c) State three examples of feeds for cattle under concentrates.

---

---

---

(3 marks)

50. (a) Explain why farm records are important? Give two reasons.

---

---

(2 marks)

(b) Mention three varieties of ground nuts.

---

---

---

(3 marks)

(c) What is a forest?

---

---

(1 mark)

**End of question paper**