



# CHIKOWI ZONE

2022 STANDARD 8 END OF TERM 1 STANDARDIZED TEST

## PRIMARY SCIENCE (100 MARKS)

DATE: \_\_\_\_\_

Subject Number: P165

Time allowed: 2hours

8:00 – 10:00 am

Name of Candidate: \_\_\_\_\_

(Surname First)

Name of School: \_\_\_\_\_

- This paper contains 7 pages. Please check.
- Write your name and name of your school in the space provided and your examination number on top of each page of question paper.
- This paper consists of two sections A and B you are expected to answer all questions.
- In the table provided on this page, tick against the question number you have answered.
- Hand in your worked paper to the invigilator when time is called to stop.

@all rights reserved

**IMPORTANT**

### SECTION A (40 marks)

Encircle the letter representing the correct answer

#### AGRICULTURE

- Which of the following is not the importance of water to livestock?  
A for drinking                      B for fish farming

Question number	Tick if answered	Do not write in these columns	
1- 40			
41			
42			Turn over
43			
44			
45			
46			
47			
48			
49			
50			
51			

C for seed

germination D dip tanks

2. Which of the following is a system of agro-forestry?

- A folder banks B silvopasture  
C forest farming D sivopasture

B

D

C

Figure 1 is a diagram of a diseased chicken. Study it and use it to answer question 3 and 4.



3. Name the disease of the chicken above

- A fowl pox B new castle  
C fowl cholera D coccidiosis

4. Which of the following is not the sign and symptom of the disease above?

- A loss of balance  
B difficult in breathing  
C coughing  
D sores on the face

5. Termites in trees can be controlled by

- A banding B mulching  
C spraying D applying chemicals

6. Which of the following are two elements of agriculture?

- A sand and clay soil B water and oil  
C school and home D water and sunlight

7. Which method of fertilizer application is used in maize?

- A dollop B banding  
C broad casting D foliar

8. Name the parts labeled D.

- A barrel assembly B outlet pipe  
C tredles D pulley

9. What is the function of part labeled C?

- A carry water from the water surface  
B help in lifting the water  
C deliver water towards the garden  
D used to pump the water

10. Another name for miner nutrients is

- A trace elements B major nutrients  
C soil fertility D soil nutrients

11. An example of cash crop grown in Malawi is

- A millet B maize  
C tobacco D mangoes

12. Cassava mosaic is caused by \_\_\_\_\_

- A bacteria B virus  
C parasite D fungus

13. The following are the advantages of semi intensive system of keeping chicken except

- A it is easy to collect eggs  
B chickens do not get killed by predators  
C chickens are able to get sunshine  
D it is easy to collect manure

14. What principle can be applied in solving the problem of how to produce?

- A demand and supply  
B substitution of inputs  
C comparative advantage  
D market research

15. Which of the following is the correct spacing of Chinese Cabbage between rows?

- A 50cm B 30cm  
C 60cm D 45cm

Figure 2 below is a diagram of the farm implement. Use it to answer question 8 and 9.

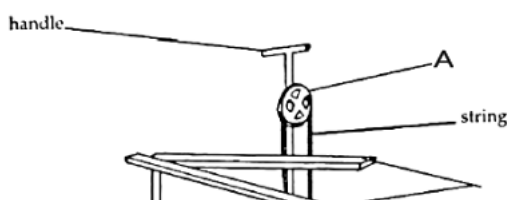
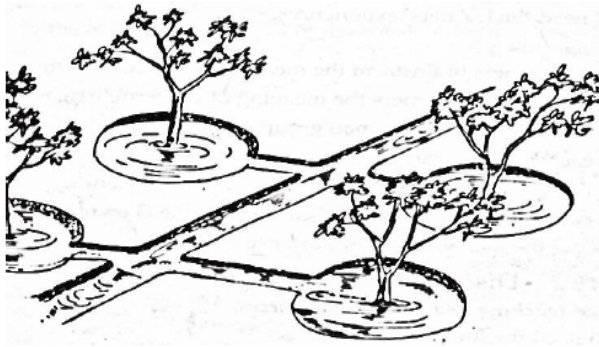


Figure 3 is a method of irrigation. Use it to answer question 16 and 17.



16. Name the method of irrigation above.
- A sprinkler irrigation  
 B basin irrigation  
 C drip irrigation  
 D flooding irrigation
17. Which crops are suitable for the method of irrigation above?
- A fruit trees            B maize  
 C rice                    D vegetables
18. What method of weeding flower beds is applicable when flowers are widely spaced?
- A light hoeing        B chemical weeding  
 C slashing            D hand weeding
19. Which of the following is not a factor of production?
- A land                    B capital  
 C equipment            D management
20. Which of the following groundnuts varieties have the same seed rate?
- 1 Malimba            2 Kakoma  
 3 Manipinta        4 Baka
- A 1 and 2                B 2 and 4  
 C 2 and 3                D 1 and 4

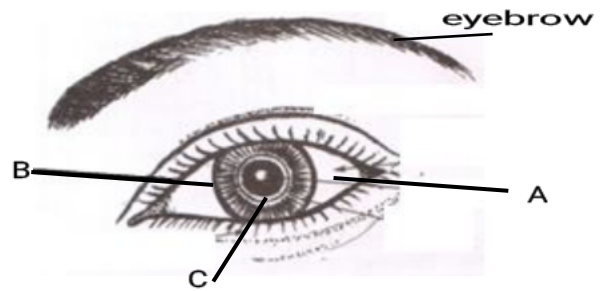
**SCIENCE AND TECHNOLOGY**

21. The part of the brain responsible for controlling blood pressure is called \_\_\_\_\_
- A cerebellum            B cerebrum

C medulla oblongata        D spinal cord

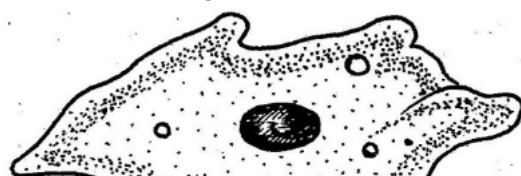
22. The following are plants dispersed by explosive mechanisms except \_\_\_\_\_
- A castor oil            B tridax  
 C beans                D chitedze
23. Another name of the hip bone is \_\_\_\_\_
- A pelvis                B scapula  
 C carpals              D fibula

Figure 1 below is the diagram of a sense organ. Study it and use it to answer question 24 and 25.



24. Name the part labeled A.
- A eyelashes                B pupil  
 C eyelid                    D sclera
25. What is the function of part labeled B?
- A allows light to get into the eye  
 B controls the size of the pupils  
 C protect the eye from foreign bodies  
 D beautify the eye
26. The blood vessel which carries blood away from the heart is known as \_\_\_\_\_
- A artery                B vein  
 C capillary            D ventricle
27. Which of the following is not a sign and symptom of round worms?
- A vomiting                B loss of appetite  
 C diarrhoea                D nausea
28. The part of digestive system where water is absorbed from the undigested food is \_\_\_\_\_
- A stomach                B colon  
 C mouth                    D anus

Figure 2 is a diagram of a microscopic organism. Use it to answer question 29 and 30.



29. Name the microscopic organism above.

- A trypanosome      B plasmodia
- C octopus            D amoeba

30. To which group of microscopic organism does the figure belong \_\_\_\_\_

- A worms              B protozoa
- C mollusks          D arthropods

31. The following are family planning methods for men

- 1 Vasectomy                      2 Tuba ligation
- 3 Norplant                        4 Spermicides
- A 1 and 2                        B 2 and 3
- C 1 and 4                        D 3 and 4

32. The following are technologies for farming except \_\_\_\_\_

- A hoe                      B plough
- C planting frame      D catapult

33. What name is given to a tissue that attaches muscles to bones?

- A joints                  B tendons
- C ligaments              D cartilage

34. The stage of scientific investigation where hypothesis is tested is called \_\_\_\_\_

- A implementation stage
- B planning stage
- C concluding stage
- D evaluation stage

35. Which of the following characteristics

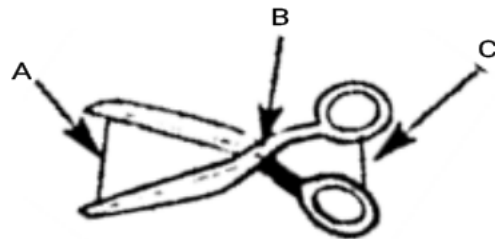
enables a bat belong to mammals?

- A lays eggs
- B living in the house
- C bearing live young ones
- D breathing using lungs

36. To which part of a plant does photosynthesis occur?

- A roots                      B stem
- C leaves                    D fruits

**Figure 3 below is a diagram of a simple machine. Use it to answer question 37 and 38.**



37. Name the part labeled B

- A load                      B effort
- C fulcrum                D lever

38. To which class of levers does a machine belong?

- A second class      B third class
- C first class                      D forth class

39. Which property of light is used in a pin hole camera?

- A light travels in straight line
- B light reflection
- C light refraction
- D light travels at high speed

40. The following are suitable foods for invalids except \_\_\_\_\_

- A boiled eggs              B fruit juice
- C fried fish                D toasted bread

**SECTION B (60 marks)**

**Answer all questions in the space provided.**

**AGRICULTURE**

41. (a) Define animal husbandry practices

---

---

(2 marks)

Name of Candidate: \_\_\_\_\_

(b) Give two ways of managing farm animals

\_\_\_\_\_  
\_\_\_\_\_(2 marks)

42. (a) Mention the suitable feed for a layer chicken of 9 to 16 weeks old.

\_\_\_\_\_(1 mark)

(b) Explain why layers on locally prepared feeds must be provided with lime, burnt and crushed bones or egg shells.

\_\_\_\_\_  
\_\_\_\_\_(2 marks)

(c) What does the term cannibalism mean in chicken keeping?

\_\_\_\_\_(2 marks)

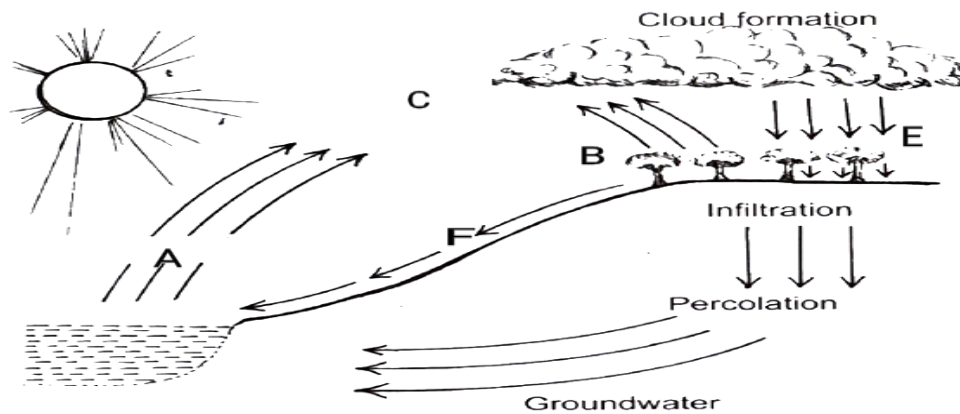
43. (a) Define water pollution

\_\_\_\_\_(2 marks)

(b) Describe any two causes of water pollution

\_\_\_\_\_  
\_\_\_\_\_(4 marks)

The figure below shows processes and stages of water cycle. Study it and use it to answer questions that follow



44. (a) Name the stages labeled A and C

\_\_\_\_\_  
\_\_\_\_\_(2 marks)

(b) What do you call the combination of stage A and B?

\_\_\_\_\_(2 marks)

(c) Explain what will happen to the soil without enough ground cover in stage F?

\_\_\_\_\_

Name of Candidate: \_\_\_\_\_

\_\_\_\_\_ (2 marks)  
45. (a) Draw a wheel barrow and label any three parts

(5 marks)

(b) State two uses of a wind mill

\_\_\_\_\_  
\_\_\_\_\_ (2 marks)

(c) What are the two safety measures in using a farm cart?

\_\_\_\_\_  
\_\_\_\_\_ (2 marks)

### SCIENCE AND TECHNOLOGY

46. (a) Where exactly in the lungs does the exchange of oxygen and carbon dioxide occur?  
\_\_\_\_\_ (1 mark)

(b) Explain what happens to each of the following during inspiration

i. Diaphragm

\_\_\_\_\_ (2 marks)

ii. Ribs

\_\_\_\_\_ (2 marks)

The figure below shows a jar with a piece of meat in it. Study it and use it to answer questions that follow



47. (a) What is the aim of the above experiment?  
\_\_\_\_\_ (2 marks)

(b) Explain what will happen to a piece of meat inside the jar after a few days?

\_\_\_\_\_  
\_\_\_\_\_ (2 marks)

(c) Mention any two stages which the process above will go through.

Name of Candidate: \_\_\_\_\_

\_\_\_\_\_  
\_\_\_\_\_(2 marks)

48. (a) Give any two groups of animals according to the food they eat with an example in each
- i. \_\_\_\_\_ Example \_\_\_\_\_ (2 marks)
  - ii. \_\_\_\_\_ Example \_\_\_\_\_ (2 marks)
- (b) Construct a food chain of the following living things: birds, grass and grasshoppers

(2 marks)

49. (a) Define "bleach" in laundry.

\_\_\_\_\_(2 marks)

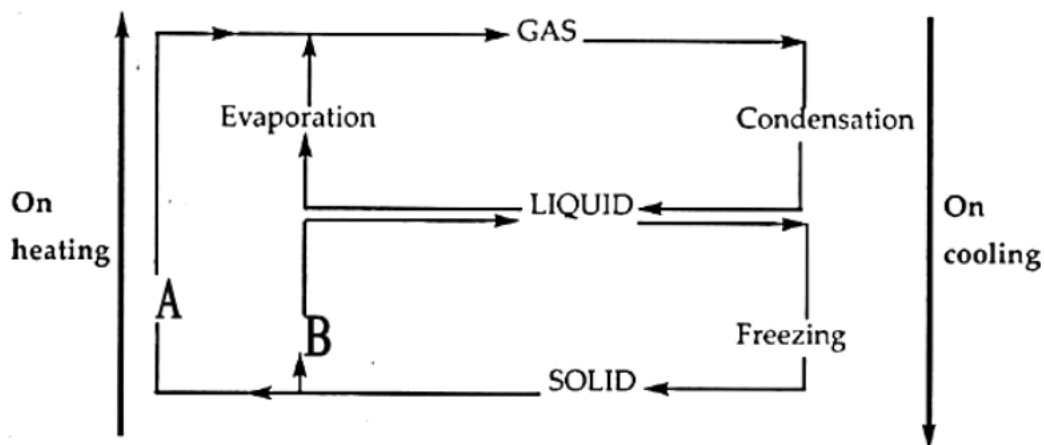
- (b) Mention two types of fabrics in which bleaches are used.

\_\_\_\_\_  
\_\_\_\_\_(2 marks)

- (c) State any two importance of laundering garments and articles

\_\_\_\_\_  
\_\_\_\_\_(4 marks)

The figure below shows processes of change of states of matter. Study it and use it to answer question 50.



50. (a) What process of change labeled A?

\_\_\_\_\_(1 mark)

- (b) Give two examples of matter which undergo process of change labeled B

\_\_\_\_\_  
\_\_\_\_\_(2 marks)

- (c) Describe any two applications of changes of states of matter in everyday life.

\_\_\_\_\_

Name of Candidate: \_\_\_\_\_

\_\_\_\_\_  
(2 marks)

# END OF QUESTION PAPER