



MPHANDE ZONE EXAMINATIONS BOARD
2024 STANDARD SIX END OF TERM TWO EXAMINATION
PRIMARY SCIENCE

(100 MARKS)

SCHOOL NAME: _____

Instructions

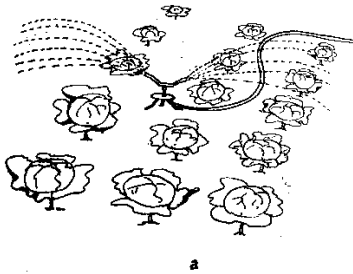
- Write your name on top of each page
- Answer all question
- This paper contains three section A and B

SECTION A: AGRICULTURE (30 MARKS MULTIPLE CHOICE)

- | | |
|-----------------------------------------------------------------------------------------------------------------------------------------------------------------------------------------------------------------------------------------------------------------------------------------------------------------------------------------------------------------------------------------------------------------------------------------------------------------------------------------------------------------------------------------------------------------------------------------------------------------------------------------------------------------------------------------------------------------------------------------------------------------------------------------------------------------------------------------------------------------------------------------------------------------------------------------|---------------------------------------------------------------------------------------------------------------------------------------------------------------------------------------------------------------------------------------------------------------------------------------------------------------------------------------------------------------------------------------------------------------------------------------------------------------------------------------------------------------------------------------------------------------------------------------------------------------------------------------------------------------------------------------------|
| <p>1. Which of the following could help control leaf spot in groundnuts</p> <ul style="list-style-type: none">A. Using recommended spacingB. Uprooting the diseased plantsC. Practicing crop rotationD. Early planting <p>2. Which of the following activities is involved in land preparation</p> <ul style="list-style-type: none">A. BankingB. Making box ridgesC. Weeding the landD. Harvesting <p>3. Which of the following are cash crops grown in Malawi</p> <ul style="list-style-type: none">A. Millet and teaB. Peas and watermelonC. Cotton and coffeeD. Maize and tobacco <p>4. The following are importance of trees grown in Malawi except</p> <ul style="list-style-type: none">A. Foreign exchangeB. MedicineC. Water conservationD. Natural forest | <p>5. In which of the following is the type of farming</p> <ul style="list-style-type: none">A. Animal productionB. Crop productionC. Subsistence farmingD. Holticulture <p>6. In which of the following is the importance of farm records</p> <ul style="list-style-type: none">A. Help farm to calculate profit and lossB. Financial farm recordsC. Crop recordsD. Layers records <p>7. The following are uses of water to crops <u>except</u></p> <ul style="list-style-type: none">A. Irrigation cropsB. Seed germinationC. For drinkingD. Making plant food |
|-----------------------------------------------------------------------------------------------------------------------------------------------------------------------------------------------------------------------------------------------------------------------------------------------------------------------------------------------------------------------------------------------------------------------------------------------------------------------------------------------------------------------------------------------------------------------------------------------------------------------------------------------------------------------------------------------------------------------------------------------------------------------------------------------------------------------------------------------------------------------------------------------------------------------------------------|---------------------------------------------------------------------------------------------------------------------------------------------------------------------------------------------------------------------------------------------------------------------------------------------------------------------------------------------------------------------------------------------------------------------------------------------------------------------------------------------------------------------------------------------------------------------------------------------------------------------------------------------------------------------------------------------|

8. In which of the following is the factor to consider when selecting seeds and planting materials for Cassava and groundnuts
- Large size
 - Site selection
 - Easy to fill the land
 - Chalimbana

Figure 1 below shows different methods of irrigation. Use it to answer questions that follows



9. Identify the irrigation methods above
- Sprinkler irrigation
 - Drip irrigation
 - Basin irrigation
 - Flood irrigation
10. Which of the following is a type of irrigation suitable for rice
- Drip irrigation
 - Basin irrigation
 - Flood irrigation
 - Sprinkler irrigation
11. The following are examples of agricultural environment except
- Plants
 - Animals
 - Soil
 - People

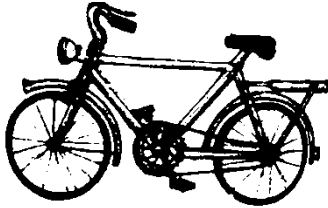
12. In which of the following is the importance of farming calendar
- Source of farm records
 - Easy to till the land
 - Promotes the decomposition of crop residue
 - Ploughing the land
13. The following are common weeds of groundnuts and cassava except
- Ploughing and msonthi
 - Bonongwe and msonthi
 - Chisoso and Nansongole
 - Khovani and Denje
14. In which of the following is the importance of soil
- Shelling dry maize
 - Transporting materials
 - It hold plant
 - Irrigating crops
15. The following is the use of wind mill
- Irrigation crops
 - Generating electricity
 - Transporting farm produce
 - Shelling dry maize

SCIENCE AND TECHNOLOGY

16. The study of universe and the plants is called
- Technology
 - Scientific investigation
 - Science
 - Investigation

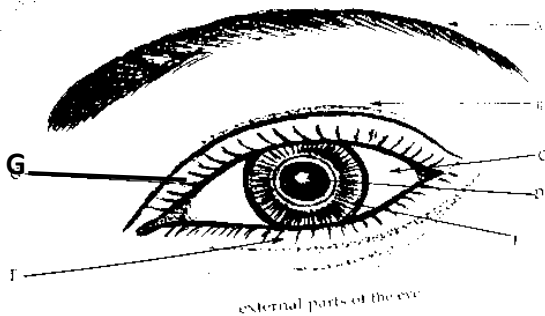
17. In which of the following is last stage in scientific investigation
- Making prediction
 - Knowing the problem
 - Planning
 - Making conclusion

Figure 2 below is a diagram showing a technology. Use it to answer question 19



18. Identify the technology above
- grinding stove
 - hoe
 - bicycle
 - cellphone
19. The following are the functions of a skeleton except
- It gives support to the body
 - It assists in movement
 - It gives shape to the body
 - Ball and socket joints
20. The following are the parts of the nose except
- Ala
 - Tip of nose
 - Tongue
 - Nostril

Figure 3 below is a diagram shows external parts of the Eye. Use it to answer question 21



21. Name the part labelled **G**
- Eye lashes
 - Pupil
 - Upper Eyelid
 - Iris
22. Process of keeping food free from decay is called _____
- Smoking
 - Canning
 - Preservation
 - Salting
23. The following are the types of micro-organisms that cause food spoilage or decay except
- Bacteria
 - Fish yeasts
 - Moulds
24. In which of the following are the input devices of a computer
- Keyboard and mouse
 - Monitor and mouse
 - Speakers and printer
 - Keyboard and printer
25. The main part of the computer is
- Screen
 - Central processing unit (CPU)
 - Keyboard
 - Mouse
26. In which of the following is the function of leaves
- Storing food for the plant
 - Connecting leaves and branches
 - They hold the plant in the soil
 - Making plant food

27. The following are the external parts of the plant except

- A. Leaves
- B. Stem
- C. Printer
- D. Flowers

28. In which of the following is the source of leaf energy

- A. Friction
- B. For security
- C. Taking picture
- D. For egg production

29. The following are the sources of light except

- A. Sun
- B. Fire flies
- C. Stars
- D. Moon

30. _____ is a place where food is stored, prepared and cooked

- A. Hygiene
- B. Sweeping
- C. Kitchen
- D. Kitchen hygiene

SECTION B (70 MARKS)

AGRICULTURE (35 MARKS)

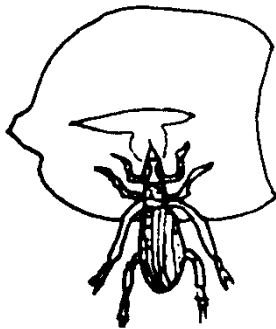
31. (a) Explain why farming is regarded as business

_____ (2 marks)

(b) Mention any two examples of agricultural environment

_____ (4 marks)

Figure 4 below are pictures of maize pests. Use it to answer question 32



32. (a) Mention the maize pest above

_____ (2 marks)

(b) Explain how the maize pest mentioned in question 32 a can be controlled

_____ (2 marks)

33. (a) mention two types of farm records

_____ (4 marks)

(b) State any two sources of water

_____ (2 marks)

34. (a) Mention any two components of soil

_____ (4 marks)

(b) Name any two examples of soil organisms

_____ (4 marks)

35. (a) List any two activities involved in land preparation

_____ (4 marks)

(b) Give one reason for land preparation

_____ (2 marks)

36. (a) State any two safety rules to be observed when using farm implements

_____ (4 marks)

(b) Mention one function of ox-card

_____ (1 mark)

SCIENCE AND TECHNOLOGY (35 MARKS)

37. (a) Give any two examples of parasites

_____ (4 marks)

(b) An organism that lives and feeds on other living things is called

_____ (2 marks)

38. (a) Mention any two problems of marketing

_____ (4 marks)

(b) State any two technologies that are used for sending or receiving messages

_____ (4 marks)

39. (a) Give two types of food preservation technologies

_____ (4 marks)

(b) Why is food preservation important? Give two reasons

_____ (4 marks)

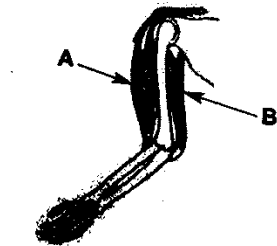
40. (a) Describe any two reasons for cooking food

_____ (4 marks)

(b) State any two methods of cooking

_____ (4 marks)

Study the illustration below and answer the questions 41 a and 41 b



41. (a) Name the parts labelled A and B

A. _____
B. _____

(4 marks)

(b) Name the tissue which attaches muscles to bones

_____ (1 mark)

END OF QUESTION PAPER