

EXAMINATION NUMBER:

NGOLOWINDO ZONAL EXAMINATIONS BOARD



2024 PRIMARY SCHOOL LEAVING CERTIFICATE ZONAL MOCK EXAMINATIONS

PRIMARY SCIENCE
(100 marks)

Subject Number: P163
Time Allowed: 2 HOURS
08:00am – 10:00am

Date: _____

Name of Candidate: _____
(Surname first)

Name of School: _____

Instructions:

- 1. This paper contains 7 pages. Please check**
- 2. The paper has two sections A and B. Section A consists of 40 multiple choice questions carrying 1 mark each. Write your answers to this section on the question paper by encircling the correct answer.**

Section B has 10 structural questions. Write your answers to this section on the question paper in the spaces provided. The maximum number of marks for each answer is indicated against the questions.

- 3. Answer all questions.**
- 4. In the table provided on this page, tick against the question number you have answered**
- 5. IMPORTANT**

- Please make sure you have written your name and examination number on the question paper in the spaces indicated.
- Hand in your question paper to the invigilator when Time is called up to stop writing.

Question Number	Tick questions 41-43 if answered	Do not write in these columns	
1 - 15	[REDACTED]		
16 - 20			
21 - 40			
41			
42			
43			
44			
45			
46			
47			
48			
49			
50			
51			

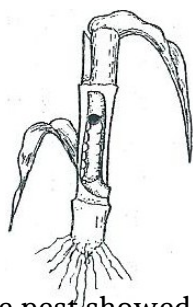
SECTION A (40 Marks)

Answer all questions in this Section by encircling the letter representing the correct answer

AGRICULTURE (20 MARKS)

- Which of the following is not a sub-branch of agriculture under crop production?
A. Agronomy C. Pomoculture
B. Apiculture D. Horticulture
- Why is it important to mulch the vegetable field beds?
A. Conserve water
B. To encourage soil texture
C. To encourage air spaces in the soil
D. To encourage soil temperature
- The following are aims of agriculture as a business except _____
A. Maximizing profits
B. Reducing cost per unit area
C. Increasing yield per unit area
D. Finding money for running farm business
- Which of the following is correct way when handling farm tools?
A. Ensure that all nuts are tight
B. Ensure that tools are not used for intended purpose
C. Ensure that blades point close to the body
D. Ensure that blades are properly fixed to their handles.

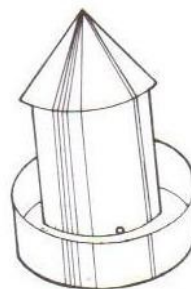
Figure 1 below shows a diagram of pest of maize. Use it to answer questions that follow



- Identify the pest showed above
A. Army worm C. Rodets
B. Red locust D. Stalk borer
- What damage does it cause to the crop?
A. Makes holes on leaves
B. Drills holes into the grain
C. Eats young plants
D. Eats leaves from the margin inwards
- Why should seedlings be hardening off?
A. It helps to prepare seedlings for the hot and dry conditions
B. To soften the seed for easy germination
C. To maintain plant population in the field

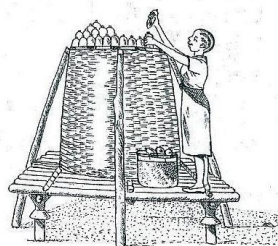
- To make the plant hard so that termite should not cut the plant
- Which of the following is the nursery disease?
A. Black leg fungus C. Damping off
B. Leaf bright D. Black-rot

Figure 2 below shows a diagram of farm tool. Use it to answer questions that follow



- The farm tool is _____
A. Chicken feed trough
B. Chicken water trough
C. Watering cane
D. Treadle pump
- For which farm enterprise is the farm tool used?
A. Cattle production C. Fish production
B. Goat production D. Poultry enterprise
- What is the meaning of the term factors of production?
A. This is effort of people in doing farm operation
B. Refers to materials available on the farm for production
C. Resources that are used to produce crops and livestock
D. Refers to the farmers knowledge and skills in performing farm operation

Figure 3 is a diagram showing marketing function. Use it to answer questions that follow



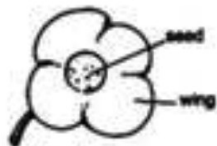
- Identify marketing activity above
A. Storage C. Selling
B. Advertising D. Transporting
- Why it is important to have activity mentioned above?
A. To attract customers

EXAMINATION NUMBER:

- B. Preserve the quality of the produce
C. It help farmers to decide what to produce
D. To ensure uniformity in quality of the produce
14. Which of the following are ways of keeping water safe?
1. Boiling
2. Filtering
3. Adding chemicals such as chlorine
4. Sitting pit latrines close to water sources
A. 1, 3 and 4 C. 1, 2 and 4
B. 2, 3 and 4 D. 1, 2 and 3
15. Why thinning is important in flower production?
A. Restrict growth
B. Maintain plant health
C. Train the plants
D. Maintain beauty of the flower
16. Which of the following is possible solution to the problem of seasonality of production?
A. Using special transport
B. Packaging produce
C. Storing the produce
D. Buying the produce
17. Which of the following is importance of using organic fertilizer?
A. It reduces weeds growth
B. It conserve moisture
C. It reduces pollution
D. It reduces competition
18. Why the deepest end of the pond should be 1.5m?
A. It allows the growth of planktons
B. It is easy to see the fish
C. It is easy to feed the fish
D. To allow fish not to go deeper
19. Which of the following is an example of concentrates?
A. Millet C. Groundnuts haulm
B. Maize stalks D. maize bran
20. Which of the following is a common pest of agroforestry trees?
A. Rodents C. Termites
B. Bees D. Monkeys

SCIENCE AND TECHNOLOGY (20 MARKS)

21. How can the following seed be dispersed?



- A. By animals C. By water
B. By wind D. By bursting

22. Hanging clothes on well ventilated spot in laundering after ironing is called ____
A. Storing C. Drying
B. Airing D. Bleaching
23. Which of the following is the change of state of matter from solid to gas?
A. Evaporation C. Freezing
B. Condensation D. Sublimation
24. Which of the following type of energy is used to determine the depth of the sea?
A. Light energy C. Kinetic energy
B. Sound energy D. Potential energy
25. Which of the following is mending a woolen garment by weaving a hole in it?
A. Darning C. Interlocking
B. Disinfecting D. Gadgeting
26. Which of the following are advantages of a traditional kitchen over a modern kitchen?
1. It has a working surface
2. It is easy to maintain
3. It is cheap to construct
4. It has limited space
A. 3 and 4 C. 2 and 3
B. 1 and 4 D. 1 and 2
27. Which of the following parts of brain is responsible for controlling?
A. Medulla oblongata D. Cerebrum
B. Cellerberum D. Spinal cord
28. When a bottle of perfume is brought into a room and opened the perfume is smelt at any point in the room. This shows that gases ____
A. Have small particles
B. Increase in volume
C. Cannot be compressed
D. Flow in all direction
29. The advantage of using information and communication technologies in our everyday life is that ____
A. Increase demand for unskilled labour
B. Increase demand for skilled labour
C. Decrease demand for unskilled labour
D. Decrease demand for skilled labour
30. Air sacs in the lungs are important because it is where ____
A. It is where the exchange of oxygen and carbon takes place
B. To exchange of oxygen and urea takes place
C. Carbon dioxide is mixed up with oxygen
D. Urea is excreted from the body

Figure 5 is a diagram showing vertebrates. Use it to answer questions that follow



EXAMINATION NUMBER:

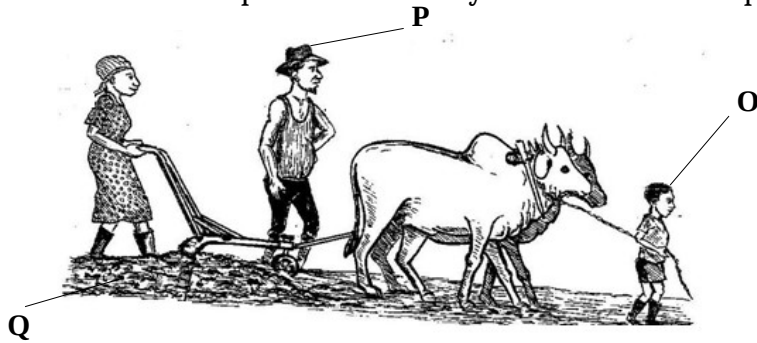
43. a. Why are the farmers encourage to store cassava in processed form? (2 marks)

b. Explain any two ways of managing the following unfavourable condition of the major elements of agricultural environment:

i) Hard soil (2 marks)

ii) Strong wind (2 marks)

Figure 8 below shows some factors of production. Study it and answer the questions that follow



44. a. Name the factors of production labeled

O _____ (1 mark)

P _____ (1 mark)

b. Describe how Q may affect agricultural production (2 marks)

c. Why New Zealand white and California are recommended breeds in Malawi? (2 marks)

d. Mention any two types of agroforestry _____ and _____ (2 marks)

45. a. Give a reason why farmers will be encouraged to produce commodities when they are scarce

(1 mark)

b. List down any two methods of fruit propagation _____ and _____ (2 marks)

46. a. Classify the following breeds of cattle into beef and dairy: Braham, Fresian, Jersey and Hereford
Beef :

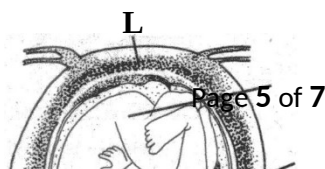
Dairy :

(4 marks)

b. Explain two reasons why placing bedding on the floor in a cattle house is important (2 marks)

SCIENCE AND TECHNOLOGY (30 MARKS)

Figure 9 is a diagram showing reproduction in human beings. Use it to answer questions that follow



M
K

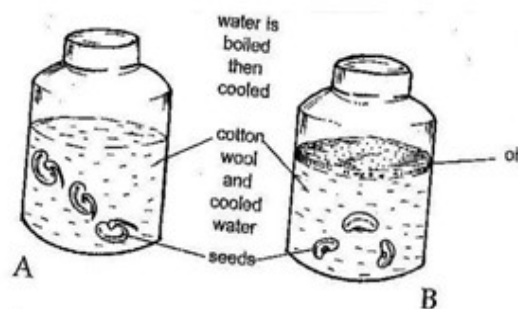
N

47. a. Which letters represents
- i) Umbilical cord _____ (1 mark)
 - ii) Cervix _____ (1 mark)
- b. What are the function of the letter
- L _____ (1 mark)
 - M _____ (1 mark)
- c. Mention any two examples of mineral stains (2 marks)

48. a. Define digestion (1 mark)
-
- b. Distinguish between a snail and worm (2 marks)
-
- c. Give any two reasons why a honey – bee is a useful insect (2 marks)
-
- d. Give one reason why food should be covered in a water proof material when steaming

(1 mark)

Figure 10 shows a set up of an experiment. Use it to answer questions that follow



49. a. What conditions for seed germination is being investigated? (1 mark)
-
- b. Why was boiled water used? (1 mark)
-
- c. Why was the oil added in bottle B? (1 mark)
-
- d. State any two reasons for the family planning (2 marks)
-

50. a. What method would use to separate the following mixtures?
- i) Salt and water _____ (1 mark)
 - ii) Water and paraffin _____ (1 mark)
- b. How can the following nutritional deficiency diseases be prevented?

EXAMINATION NUMBER:

i) Goitre (1 mark)

ii) Night blindness (1 mark)

c. What is the different between natural fabrics and artificial fabrics? (2 marks)

d. Classify the following animals into vertebrates and invertebrates animals: Birds, Cockroaches, Lizards, amoeba.

Vertebrates	Invertebrates

(4 marks)

51. a. Explain one way in which freezing preserving food (2 marks)

b. What is other name for potential energy? (1 mark)

END OF QUESTION PAPER

NB: This paper contains 7 pages.